

Beyond The Horizon

Analog Expertise

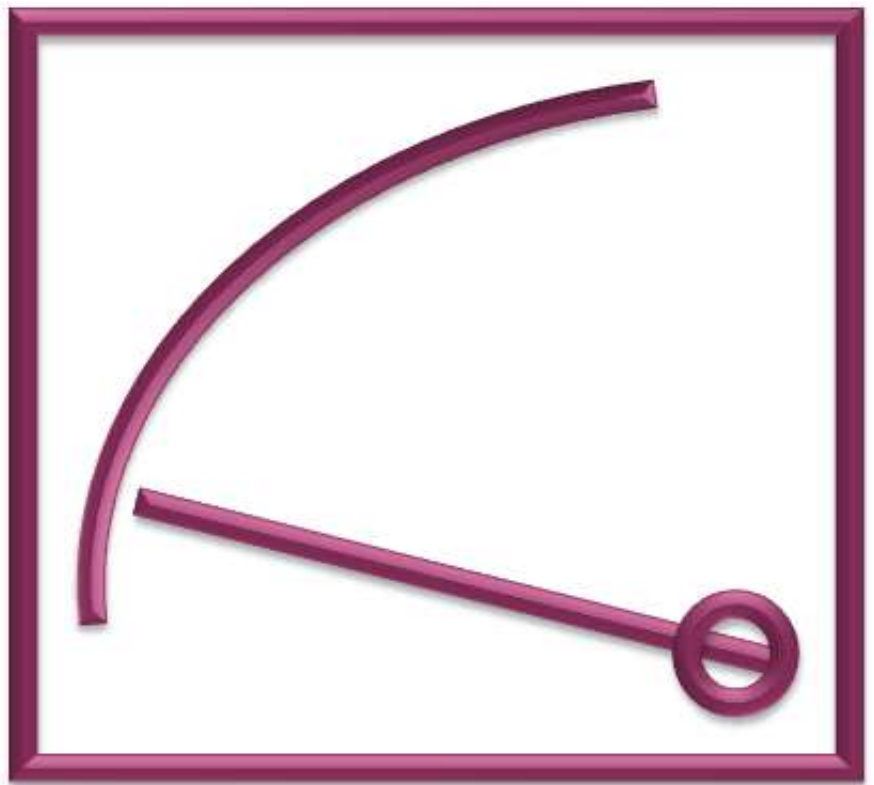


Rishabh Instruments Pvt. Ltd.

Price List w.e.f January 2022

Index

Analog Expertise	Page No.
Analog Panel Meters	01
CAM Switches	06
Current Transformers	11
DC Shunts	44
Terms and conditions	45



Analog Panel Meters



90° Scale

Group	Type	Description	48x48	72x72	96x96	144x144
			mm	mm	mm	mm
			LP (INR)			
Moving Iron AC Meters			EQ41	EQ71	EQ91	EQ11
EQ	Voltmeter	6, 10, 15, 25, 30, 40, 50, 75, 100, 110, 120, 125, 132.5, 133.33, 150, 250, 300V	540	495	570	830
		400, 500, 600, 750V	635	540	625	925
		Non Standard Voltmeter/Non Std PT Operated Voltmeter/Other than above ranges (upto 1000V)	730	635	720	1,075
	Milli -Ammeter	100, 150, 250, 400, 500, 600, 750mA	530	485	530	730
		1, 1.2, 1.25, 1.5, 2.5, 4, 5, 6, 10, 15, 20, 25, CT Operated 5A/1A Secondary	530	475	495	700
		30, 40, 50, 60A	745	570	605	830
Ammeter	100A	-	570	605	830	
	Non Standard Ammeter/Other than above ranges (upto 100A)	795	720	755	1,055	
Moving Iron AC Meters with In-built Selector Switch			SS71	SS91		
SS	Voltmeter / Ammeter	Inbuilt selector switch type Ammeters & Voltmeters (EQ-SWT)	-	765	855	-
Moving Coil DC Meters			PQ41	PQ71	PQ91	PQ11
PQ	Milli -Voltmeter	15**, 25**, 40**, 50 mV	865	750	820	-
		60, 75, 100, 150, 250, 400, 600 & 750mV	835	725	790	1,390
		1, 1.5, 2.5, 4, 5, 6, 10, 15, 20, 25, 30V	835	725	855	1,390
	Voltmeter	40, 50, 60, 100, 150, 200, 250, 300V	950	835	895	1,400
		400, 500, 600V	1,035	845	975	1,460
		Non Standard Voltmeter/Other than above ranges (upto 1000V)	1,310	1,190	1,270	1,735
Micro-Ammeter	15**, 25**, 40**, 50*, 60*, 75uA	1,070	990	1,095	-	
	100, 150, 200, 250, 400, 500, 600, 750uA	940	855	895	1,400	
	1, 1.5, 2.5, 4, 5, 6, 10, 15, 20, 25, 40, 60, 100, 150, 200, 250, 300, 400, 500, 600, 750 mA	800	725	790	1,320	
Milli -Ammeter	1, 1.5, 2.5, 4, 5, 6, 10, 15, 20, 25A	800	725	790	1,320	
	30, 40, 60A	965	835	895	1,590	
	100A	-	975	990	1,700	
Ammeter	4-20mA	930	865	920	1,525	
	Non Standard Ammeter/Other than above ranges (upto 100A)	-	1,155	1,175	2,030	

** Class 5, * Class 2.5



Analog Panel Meters



90° Scale

Group	Type	Description	48x48	72x72	96x96	144x144
			mm	mm	mm	mm
			LP (INR)			
Moving Coil AC Meters with Rectifier			VQ41	VQ71	VQ91	VQ11
VQ	Voltmeter	6**, 10**, 15**, 20**, 25**, 40**, 50*, 60*, 75, 100, 120, 125, 150, 250, 300, 400, 500, 600V	1,325	1,125	1,280	1,795
		Non Standard Voltmeter/Other than above ranges (upto 600V)	1,540	1,305	1,490	1,960
	Micro-Ammeter	100, 150, 250, 400, 50, 600, 750uA	1,225	1,135	1,180	1,715
	Milli -Ammeter	1, 1.5, 2.5, 4, 5, 6, 10, 15, 20, 25, 30, 40, 60, 75, 100mA	1,080	1,000	1,070	1,635
		150, 250, 400, 600, 750mA	1,205	1,125	1,190	1,760
	Ammeter	1, 1.5, 2.5, 4, 5A	-	1,250	1,325	1,885
6, 10A		-	-	1,405	2,010	
Non Standard Ammeter/Other than above ranges (upto 10A)			-	-	1,490	2,075

** Class 5, * Class 2.5

Pointer type Frequency Meters with Built In Transducer			ZQ41	ZQ71	ZQ91	ZQ11
ZQ	Frequency Meter	45-50-55 Hz, 45-55-65 Hz, 55-60-65 Hz	1,125	1,070	1,155	1,240
		380-400-420 Hz, 360-400-440 Hz	-	1,030	1,105	1,190

Vibrating Reed type Frequency Meters			FQ71	FQ91	FQ11	
FQ	Frequency Meter	45-50-55 Hz, 47-50-53 Hz	-	1,000	1,035	-

Power Factor Meters with Built In Transducer			CQ71	CQ91	CQ11	
CQ	Power Factor Meter	1Ph. (Not Applicable for CQ71) & 3Ph. balanced load	-	1,770	1,815	1,920
		3Ph., 3W unbalanced load (D2C)	-	-	3,985	4,480
		3Ph., 4W unbalanced load (V3C)	-	-	4,865	5,445

Cap 0.8-1-0.3 Ind (Bal load), Cap 0.8-1-0.8 Ind (Bal load), Cap 0.5-1-0.5 Ind (Bal & Unbal Load). For 1 Phase meter PF range will be Cap 0.5-1-0.5 Ind only.

For operating frequency 60Hz - Please contact to nearest sales office.

Active (W) / Reactive (B) Power Meters with Built In Transducer			WQ91	WQ11	
WQ	Active Power Meter (Wattmeter)	Single Element Single Phase (E1W)	-	1,940	2,170
		Single Element 3 Phase 3 Wire Balanced Load (D1W)	-	2,315	2,475
		Two Element 3 Phase 3 Wire Unbalanced Load (D2W)	-	3,080	3,415
		Single Element 3 Phase 4 Wire Balanced Load (V1W)	-	2,535	2,700
		Three Element 3 Phase 4 Wire Unbalanced Load (V3W)	-	3,810	4,235
WQ	Re-active Power Meter (VAr Meter)	Single Element Single Phase (E1B)	-	1,940	2,170
		Single Element 3 Phase 3 Wire Balanced Load (D1B)	-	2,315	2,475
		Two Element 3 Phase 3 Wire Unbalanced Load (D2B)	-	3,080	3,415
		Single Element 3 Phase 4 Wire Balanced Load (V1B)	-	2,535	2,700
		Three Element 3 Phase 4 Wire Unbalanced Load (V3B)	-	3,810	4,235

Please Specify Measuring Range, Primary & Secondary Voltage & Current While Ordering. Allowable λ factor ranges 0.5 - 1.5

Synchroscope Meters			SQ91	SQ11
SQ	Synchroscope	110/100V, 127/120V, 240/220V, 440/380V, 480/415V (LED TYPE)	2,700	4,090

Maximum Demand Ammeters - BIQ / BIEQ			BI41	BI71	BE71	BI91	BE91
MDI	Ammeter	.../1A/1.2/5/6A (8 minutes / 15 minutes)	1,915	1,705	2,115	1,615	1,975
		.../1A/1.2/5/6A (20 minutes)	-	2,610	2,910	2,910	3,045



Analog Panel Meters



240° Scale

Group	Type	Description	48x48	72x72	96x96	144x144
			mm	mm	mm	mm
			LP (INR)			
Moving Coil DC Meters			PL41	PL71	PL91	PL11
PL	Milli-Voltmeter	50, 60, 75, 100, 150, 250, 400, 600 & 750 mV	-	-	-	-
		1, 1.5, 2.5, 4, 5, 6, 10, 15, 25, 30, 40, 50, 60, 75, 100V	1,495	1,380	1,455	1,710
	Voltmeter	150, 200, 250, 300, 400, 500, 600V	-	-	-	-
		Non Standard Voltmeter/Other than above ranges (upto 600V)	-	1,470	1,565	1,840
	Micro-Ammeter	50*, 60*, 75, 100uA	-	1,455	1,805	1,850
		100, 150, 250, 400, 500, 600uA	-	1,315	1,400	1,775
	Milli-Ammeter	1, 1.5, 2.5, 4, 5, 6, 10, 15, 20, 25, 40, 50, 60, 100, 150, 200, 250, 300, 400, 500, 600, 750 mA	-	1,255	1,340	1,565
		1, 1.5, 2.5, 4, 5, 6, 10, 15, 20, 25A	-	-	1,635	1,710
	Ammeter	30, 40, 50, 60A	-	-	1,635	1,710
		4-20mA	1,565	1,425	1,495	1,765
	Non Standard Ammeter/Other than above ranges (upto 60A)	-	1,530	1,615	1,870	

* Class 2.5

Moving Coil AC Meters with Rectifier			VL71	VL91	VL11
VL	Voltmeter	6**, 10**, 20**, 25**, 40**, 50*, 60*, 100, 110, 120, 125, 132.5, 133.33, 150, 200, 250, 300, 400, 500, 600V	1,600	1,700	1,945
		Non Standard Voltmeter/Other than above ranges (upto 600V)	1,710	1,795	2,075
	Ammeter	1A & 5A CT operated	1,730	1,815	2,065

** Class 5, * Class 2.5

Frequency Meters with Built In Transducer			ZL91	ZL11
ZL	Frequency Meter	45-50-55 Hz, 45-55-65 Hz, 55-60-65 Hz	2,065	2,265
		380-400-420 Hz, 360-400-440 Hz	2,170	2,370

Power Factor Meters with Built In Transducer			CL91	CL11
CL	Power Factor Meter	1Ph. & 3Ph. balanced load	3,285	4,185
		3Ph., 3W unbalanced load (D2C)	5,965	6,870
		3Ph., 4W unbalanced load (V3C)	6,510	7,405

Cap 0.8-1-0.3 Ind (Balanced load), Cap 0.8-1-0.8 Ind (Balanced load), Cap 0.5-1-0.5 Ind (Balanced & Unbalanced Load).

For 1 Phase meter PF range will be Cap 0.5-1-0.5 Ind and Class 1.5 applicable only.

For operating frequency 60Hz - Please contact to nearest sales office.

Active (W) / Reactive (B) Power Meters with Built-in Transducer			WL91	WL11
WL	Active Power Meter (Wattmeter)	Single Element Single Phase (E1W)	3,940	4,120
		Single Element 3 Phase 3 Wire Balanced Load (D1W)	3,770	3,940
		Two Element 3 Phase 3 Wire Unbalanced Load (D2W)	5,560	5,740
	Re-active Power Meter (VAr Meter)	Single Element 3 Phase 4 Wire Balanced Load (V1W)	3,940	4,120
		Three Element 3 Phase 4 Wire Unbalanced Load (V3W)	5,090	5,240
		Single Element Single Phase (E1B)	3,940	4,120
		Single Element 3 Phase 3 Wire Balanced Load (D1B)	3,770	3,940
		Two Element 3 Phase 3 Wire Unbalanced Load (D2B)	5,560	5,740
		Single Element 3 Phase 4 Wire Balanced Load (V1B)	3,940	4,120
		Three Element 3 Phase 4 Wire Unbalanced Load (V3B)	5,090	5,240

Please Specify Measuring Range, Primary & Secondary Voltage & Current While Ordering. Allowable λ factor ranges 0.5 - 1.5



Analog Panel Meters

Additional Charges Applicable for 90 deg / 240 deg deflection meters	LP (INR)
Standard Scale [e.g. 300/5A (If separate scale is required)]	30
Non-Standard Scale [e.g. RPM, m/min., %, BAR etc. (If separate scale is required)]	55
Customised Scale [Like rpm, m/min., %, BAR etc. This is a surcharge for non standard scale along with the meter price = LP + surcharge]	40
Ammeter (x1) (without suppression)	-
Ammeter (x2) or (x3) suppression (for EQ meters only)	-
Ammeter (x5) or (x6) suppression (for EQ meters only)	30
Ammeter (x2) or (x6) suppression (for VQ & VL meters only)	40
Dual Range with three terminals (for EQ 96 and EQ 144 sizes only)	80
Centre Zero (for PQ, PL, WQ & WL meters only)	30
Zero between left & centre (for PQ, PL, WQ & WL meters only)	35
Zero suppression (1.....5V DC) for PQ or PL meters	40
Additional numbering / marking / red mark	35
Coloured Sectors (red/green) per sector	35
Black scale & yellow / white pointer marking & number	65
Customised frequency EQ (40Hz.....400Hz)	40
Calibration at position other than perpendicular	35
Accuracy Class 1	35
Dual scale with two terminals	40
Triple scale with two terminals	55
Red Pointer Assembly 72x72 or 96x96	65
Spares	LP (INR)
Glass (48,72,96,144mm)	25
Glass with zero adjustment (48,72,96,144mm)	30
Anti glare Glass (48,72,96,144mm)	65
MDI Glass with Zero Adjustment Knob	60
Colour Bezel (White, Blue, Red, Yellow)	45
Clamp-strap with screw (set of 2)	25
Swivel fixing clamp (set of 2)	25
Spring clips (only for 48, set of 2)	45
Bezel / black frame	35
Full Back Cover as per IP-20	45
Rubber Gasket 72 Size	50
Rubber Gasket 96 Size	55
IP 65 protection kit (72 / 96 size)	100
24V DC Illumination kit	170



Analog Panel Meters



ANSI Standard Meters

Challenger Series

		Model	361	362	363	364
		Length x Height (mm)	45.7 x 57.4	76.2 x 58.5	95.3 x 73.9	131.7 x 103
		Round Cutout (mm)	40	54	54	70
Moving Iron AC Meters			EQ1C	EQ2C	EQ3C	EQ4C
EQ	Ammeters	Ammeters - Upto 30A	540	480	540	740
		Ammeters - 40 to 60A	635	580	605	860
	Voltsmeters	Voltsmeters - Upto 300V	570	500	580	815
		Voltsmeters - 400 to 600V	615	580	605	875
Moving Coil DC Meters			PQ1C	PQ2C	PQ3C	PQ4C
PQ	Ammeters	Ammeters - 100 to 500uA	875	875	1,030	1,340
		Ammeter s- 1mA to 30A	750	695	740	1,250
		Ammeter s- 40 to 60A	-	750	805	1,385
	Voltsmeters	Voltsmeter s- Upto 30V	750	695	740	1,250
		Voltsmeter s- 40 to 300V	850	785	840	1,275
		Voltsmeter s- 400 to 600V	940	840	930	1,340
Frequency Meters			ZQ1C	ZQ2C	ZQ3C	ZQ4C
ZQ	Frequency Meter	45-55Hz, 45-65Hz, 55-65Hz - 110V/240V/415V	-	1,015	1,075	-

Anush Series

		Model	11	12
		Length x Height (mm)	55.6 x 47.2	79.2 x 67.5
		Round Cutout (mm)	39	56
Moving Iron AC Meters			EQ1A	EQ2A
EQ	Ammeters	Ammeters - Upto 30A		480
		Ammeters - 40 to 60A		555
	Voltsmeters	Voltsmeters - Upto 300V		540
		Voltsmeters - 400 to 600V		555
Moving Coil DC Meters			PQ1A	PQ2A
PQ	Ammeters	Ammeter - 100 to 500uA	860	885
		Ammeter - 1mA to 30A	680	700
		Ammeter - 40 to 60A	750	770
	Voltsmeters	Voltsmeter - Upto 30V	680	700
		Voltsmeter - 40 to 300V	760	785
		Voltsmeter - 400 to 600V	830	850

Two In One Meters

Model	Type	Description	96x96 mm	144x144 mm
Moving Iron AC meters			EQ9T	EQ1T
EQ 2 in 1		AC Moving Iron Low rating (<30A) Ammeter - Voltmeter combination Meters	890	1,405
		AC Moving Iron High rating (30A & above) Ammeter - Voltmeter combination Meters	1,040	1,550
		AC Moving Iron Voltmeter - Voltmeter combination Meters	940	1,480
		AC Moving Iron Low rating (<30A) Ammeter - Low rating Ammeter (<30A) combination Meters	890	1,405
		AC Moving Iron High rating (30A & above) Ammeter - Low rating (<30A) Ammeter combination Meters	1,040	1,550
		Frequency Meters		
2 in 1	ZQ 2 in 1	Frequency - Frequency combination meters	1,575	2,085
Moving Coil DC meters			PQ9T	PQ1T
PQ 2 in 1		DC Moving Coil Low rating (<1A) Ammeter - Voltmeter combination Meters	1,405	1,915
		DC Moving Coil High rating (1A & above) Ammeter - Voltmeter combination Meters	1,565	2,050
		DC Moving Coil Voltmeter - Voltmeter combination Meters	1,340	1,860
		DC Moving Coil Low rating (<1A) Ammeter - Low rating (<1A) Ammeter combination Meters	1,405	1,915
		DC Moving Coil High rating (1A & above) Ammeter - Low rating (<1A) Ammeter combination Meters	1,565	2,050

Run - Hour Meters

Model	Type	Description	72x72 mm	96x96 mm
Rish Elapsed Time Meters (Hour meters)			ET71	ET91
ETM	Hour meters	Voltage AC Input : 100-125 / 200-250 / 380-440V 50Hz & 60Hz	1,995	2,250

CAM Switches



Breaker Control (TNC) Switches

Description	LP (INR)	
	TSR	
	25 A	32 A
TNC 1NO 1NC 60D	880	1,055
TNC 2NO 2NC 60D	1,065	1,270

Spring Return Switches

Description	LP (INR)	
	CSR	
	16 A	25 A
ON OFF SPRING RETURN 90D 1P OFF	520	790
ON OFF SPRING RETURN 90D 2P OFF	545	895
ON OFF SPRING RETURN 90D 3P OFF	620	1,070
ON OFF SPRING RETURN 90D 4P OFF	730	1,165

Description	LP (INR)	
	CSR	
	16 A	25 A
DOUBLE THROW SPRING RETURN 60D 1P 2W OFF	545	895
DOUBLE THROW SPRING RETURN 60D 2P 2W OFF	800	1,165
DOUBLE THROW SPRING RETURN 60D 3P 2W OFF	870	1,450

Description	LP (INR)	
	CSR	
	16 A	25 A
SPRING RETURN 60D 1P 2W W/OFF	500	895
SPRING RETURN 60D 2P 2W W/OFF	730	1,165
SPRING RETURN 60D 3P 2W W/OFF	790	1,450



Reverse Forward Switches

Order code	Description	LP (INR)
CRF1-D45L2XXOFS000	RF 45D 2POLE 25A	565
CRF1-D60L2XXOFS000	RF 60D 2POLE 25A	
CRF1-E45L2XXOFS000	RF 45D 2POLE 32A	665
CRF1-E60L2XXOFS000	RF 60D 2POLE 32A	
CRF1-F45L2XXOFS000	RF 45D 2POLE 40A	1,715
CRF1-F60L2XXOFS000	RF 60D 2POLE 40A	
CRF1-G45L2XXOFS000	RF 45D 2POLE 63A	2,080
CRF1-G60L2XXOFS000	RF 60D 2POLE 63A	
CRF1-D45L3XXOFS000	RF 45D 3POLE 25A	740
CRF1-D60L3XXOFS000	RF 60D 3POLE 25A	
CRF1-E45L3XXOFS000	RF 45D 3POLE 32A	850
CRF1-E60L3XXOFS000	RF 60D 3POLE 32A	
CRF1-F45L3XXOFS000	RF 45D 3POLE 40A	1,930
CRF1-F60L3XXOFS000	RF 60D 3POLE 40A	
CRF1-G45L3XXOFS000	RF 45D 3POLE 63A	2,290
CRF1-G60L3XXOFS000	RF 60D 3POLE 63A	



Rishabh Instruments Pvt. Ltd.

\$ For productwise approbations, please contact local sales office

Instrumentation Switches

Description	LP (INR)				
	CST4				
	6A (PS)	6A (MS)	10A	16A	20A
Ammeter Selector Switch - Line Currents with OFF 4 Pos.	235	245	285	350	390
Ammeter Selector Switch - Line Currents with Neutral with OFF, 5 Pos.	240	250	290	355	400
Voltmeter Selector Switch -Voltage between phases with OFF, 4 Pos.	170	180	260	315	370
Voltmeter Selector Switch - Voltage between phases and individual phases to neutral with OFF, 7 Pos.	310	320	515	595	635
Voltmeter Selector Switch - Voltage between phases to neutral with OFF, 4 Pos.	300	310	350	435	470

Note : PS - Plastic Shaft Switch
MS - Metal Shaft Switch



Changeover Switches

RISHCAM - COFF 60 / COFF 90 / CWOFF 90	Description	LP (INR)										
		CST1				CSS1				CSH1		
		6A (PS)	6A (MS)	10A	16A	20A	25A	32A	40A	63A	100A	200A
With OFF 60 Deg / 90 Deg / 90 Deg without OFF	1P 2W	150	155	275	320	325	340	380	505	670	3,340	4,800
	2P 2W	195	200	325	355	420	455	525	680	1,015	4,860	7,290
	3P 2W	240	250	400	475	585	675	730	860	1,350	6,280	9,310
	4P 2W	290	300	465	550	720	890	945	1,035	1,710	7,995	11,725

RISHCAM - PCF90	Description	LP (INR)										
		CST1				CSS1				CSH1		
		6A (PS)	6A (MS)	10A	16A	20A	25A	32A	40A	63A	100A	200A
Phase Changeover With OFF 90 Deg	1P 3W	175	180	235	275	320	325	420	610	655	2,740	3,895
	2P 3W	220	230	275	350	435	525	600	695	900	4,010	5,600
	3P 3W	265	275	325	370	500	635	660	1,025	1,395	4,270	5,960
DB Phase Changeover With OFF 90 Deg	3P 1W					-				815		-

Isolator Switches

RISHCAM - I60 / 90 / 90 CR	Description	LP (INR)										
		CST3				CSS3				CSH3		
		6A (PS)	6A (MS)	10A	16A	20A	25A	32A	40A	63A	100A	200A
Isolator 60 / 90 / 90 Deg CR	1P ON-OFF	115	120	215	255	265	280	340	420	495	2,510	3,205
	2P ON-OFF	150	155	245	285	305	335	390	500	635	3,085	4,120
	3P ON-OFF	165	170	320	350	395	450	490	590	825	3,780	5,175
	4P ON-OFF	195	200	330	370	445	530	565	680	1,015	4,545	6,275

RISHCAM - I45	Description	LP (INR)										
		CST3				CSS3				CSH3		
		6A (PS)	6A (MS)	10A	16A	20A	25A	32A	40A	63A	100A	200A
Isolator 45 Deg	1P ON-OFF	130	135	180	245	260	270	375	455	545		
	2P ON-OFF	175	180	220	285	325	365	420	560	695		-
	3P ON-OFF	205	215	265	315	410	475	560	650	945		

Multistep Switches

RISHCAM - MOFF (3 WAY)	Description	LP (INR)										
		CST2				CSS2				CSH2		
		6A (PS)	6A (MS)	10A	16A	20A	25A	32A	40A	63A	100A	200A
With OFF 90 Deg	1P 3W	175	180	315	330	340	330	410	580	645	3,340	5,040
	2P 3W	245	255	360	400	475	535	575	815	910	4,835	7,595
	3P 3W	335	350	475	670	720	790	865	1,080	1,375	6,310	9,895
	4P 3W	425	440	600	805	880	970	1,080	1,415	1,655	7,915	12,465

RISHCAM - MOFF (4 WAY)	Description	LP (INR)										
		CST2				CSS2				CSH2		
		6A (PS)	6A (MS)	10A	16A	20A	25A	32A	40A	63A	100A	200A
With OFF 60 Deg	1P 4W	200	210	280	475	520	570	630	715	940	2,975	4,255
	2P 4W	335	350	510	565	580	600	685	880	1,100	4,255	6,615
	3P 4W	470	485	470	870	925	970	1,125	1,490	1,665	11,500	14,835

RISHCAM - MOFF (5 WAY)	Description	LP (INR)										
		CST2				CSS2				CSH2		
		6A (PS)	6A (MS)	10A	16A	20A	25A	32A	40A	63A	100A	200A
With OFF 60 Deg	1P 5W	215	225	435	550	610	705	720	870	1,010	3,015	4,330
	2P 5W	395	410	665	725	825	940	1,100	1,135	1,405	4,320	6,670

Note : PS - Plastic Shaft Switch
MS - Metal Shaft Switch

Multistep Switches

RISHCAM - MOFF (6 WAY)	Description	LP (INR)										
		CST2				CSS2				CSH2		
		6A (PS)	6A (MS)	10A	16A	20A	25A	32A	40A	63A	100A	200A
With OFF 45 Deg	1P 6W	285	295	290	530	585	635	725	750	1,190	-	-
	2P 6W	470	485	455	770	860	970	1,180	1,500	1,910	-	-

RISHCAM - MOFF (7 WAY)	Description	LP (INR)										
		CST2				CSS2				CSH2		
		6A (PS)	6A (MS)	10A	16A	20A	25A	32A	40A	63A	100A	200A
With OFF 45 Deg	1P 7W	295	305	480	570	630	720	745	775	1,180	-	-

RISHCAM - MOFF (8 WAY)	Description	LP (INR)										
		CST2				CSS2				CSH2		
		6A (PS)	6A (MS)	10A	16A	20A	25A	32A	40A	63A	100A	200A
With OFF 30 Deg	1P 8W	325	335	400	565	655	-	-	-	-	-	-

RISHCAM - MOFF (9 WAY)	Description	LP (INR)										
		CST2				CSS2				CSH2		
		6A (PS)	6A (MS)	10A	16A	20A	25A	32A	40A	63A	100A	200A
With OFF 30 Deg	1P 9W	335	350	480	565	700	-	-	-	-	-	-

RISHCAM - MOFF (10 WAY)	Description	LP (INR)										
		CST2				CSS2				CSH2		
		6A (PS)	6A (MS)	10A	16A	20A	25A	32A	40A	63A	100A	200A
With OFF 30 Deg	1P 10W	380	395	495	760	1,015	-	-	-	-	-	-

RISHCAM - MOFF (11 WAY)	Description	LP (INR)										
		CST2				CSS2				CSH2		
		6A (PS)	6A (MS)	10A	16A	20A	25A	32A	40A	63A	100A	200A
With OFF 30 Deg	1P 11W	465	480	545	705	865	-	-	-	-	-	-

RISHCAM - MWOFF (3 WAY)	Description	LP (INR)										
		CST2				CSS2				CSH2		
		6A (PS)	6A (MS)	10A	16A	20A	25A	32A	40A	63A	100A	200A
Without OFF 60 Deg	1P 3W	165	170	295	335	340	420	435	660	740	2,770	4,405
	2P 3W	245	255	435	470	610	760	745	825	970	4,855	6,225
	3P 3W	335	350	545	695	735	795	855	1,190	1,400	5,240	10,045
	4P 3W	425	440	600	795	900	990	1,045	2,270	2,540	5,615	10,965

RISHCAM - MWOFF (4 WAY)	Description	LP (INR)										
		CST2				CSS2				CSH2		
		6A (PS)	6A (MS)	10A	16A	20A	25A	32A	40A	63A	100A	200A
Without OFF 90 Deg	1P 4W	185	190	320	410	445	505	520	710	1,000	3,340	3,535
	2P 4W	265	275	470	480	550	590	645	865	1,095	5,025	8,300
	3P 4W	360	375	535	750	835	925	1,015	1,105	1,470	6,685	10,965

RISHCAM - MWOFF (5 WAY)	Description	LP (INR)										
		CST2				CSS2				CSH2		
		6A (PS)	6A (MS)	10A	16A	20A	25A	32A	40A	63A	100A	200A
Without OFF 60 Deg	1P 5W	210	220	335	435	500	550	700	880	1,105	2,975	4,275
	2P 5W	395	410	375	590	755	880	955	1,210	1,520	4,305	10,305

Note : PS - Plastic Shaft Switch
MS - Metal Shaft Switch

CAM Switches



Multistep Switches

RISHCAM - MWOFF (6 WAY)	Description	LP (INR)										
		CST2				CSS2				CSH2		
		6A (PS)	6A (MS)	10A	16A	20A	25A	32A	40A	63A	100A	200A
Without OFF 60 Deg	1P 6W	235	245	285	550	580	625	720	825	1,040	4,835	9,305
	2P 6W	450	465	545	730	905	1,095	1,115	1,130	1,440	9,520	12,235

RISHCAM - MWOFF (7 WAY)	Description	LP (INR)										
		CST2				CSS2				CSH2		
		6A (PS)	6A (MS)	10A	16A	20A	25A	32A	40A	63A	100A	200A
Without OFF 45 Deg	1P 7W	285	295	360	415	570	735	740	880	1,295	-	-

RISHCAM - MWOFF (8 WAY)	Description	LP (INR)										
		CST2				CSS2				CSH2		
		6A (PS)	6A (MS)	10A	16A	20A	25A	32A	40A	63A	100A	200A
Without OFF 45 Deg	1P 8W	290	300	585	620	655	745	775	870	1,245	-	-

RISHCAM - MWOFF (9 WAY)	Description	LP (INR)										
		CST2				CSS2				CSH2		
		6A (PS)	6A (MS)	10A	16A	20A	25A	32A	40A	63A	100A	200A
Without OFF 30 Deg	1P 9W	335	350	475	965	1,045	-	-	-	-	-	-

RISHCAM - MWOFF (10 WAY)	Description	LP (INR)										
		CST2				CSS2				CSH2		
		6A (PS)	6A (MS)	10A	16A	20A	25A	32A	40A	63A	100A	200A
Without OFF 30 Deg	1P 10W	360	375	630	1,065	1,160	-	-	-	-	-	-

RISHCAM - MWOFF (11 WAY)	Description	LP (INR)										
		CST2				CSS2				CSH2		
		6A (PS)	6A (MS)	10A	16A	20A	25A	32A	40A	63A	100A	200A
Without OFF 30 Deg	1P 11W	625	645	655	1,125	1,220	-	-	-	-	-	-

RISHCAM - MWOFF (12 WAY)	Description	LP (INR)										
		CST2				CSS2				CSH2		
		6A (PS)	6A (MS)	10A	16A	20A	25A	32A	40A	63A	100A	200A
Without OFF 30 Deg	1P 12W	700	725	740	1,180	1,295	-	-	-	-	-	-

Note : PS - Plastic Shaft Switch
MS - Metal Shaft Switch



Metering Current Transformers

3 in 1 CT with RJ12 connection

Secondary Current : 100mA

KMAT Description	Primary Current (A)	Class 1	
		VA	LP (INR)
XRJ1 CTB 3PH RJ12 75mm wide	60		1,065
	100		1,120
	125	0.25	1,130
	160		1,140
	60		1,140
XRJ2 CTB 3PH RJ12 105mm wide	100		1,170
	125	0.35	1,175
	160	0.5	1,180
	250		1,215
	250		1,235
XRJ3 CTB 3PH RJ12 140mm wide	400	0.25	1,260
	630		1,310
	750	0.5	1,335
XRJ4 CTB 3PH RJ12 215mm wide	800		

Note :- Above CTs will be supplied with detachable cable length of 2 meters, for additional cable length contact local sales office.

3 Phase Nano CT

Secondary Current : 100mA

Description	Primary Current (A)	Class 0.5	
		VA	LP (INR)
X308 - CTB 3PH 65/8	63		780
X306 - CTB 3PH 90/15	125	0.1	820
X307 - CTB 3PH 116/26	250		940

3 Phase Nano CT with RJ12 connection

Secondary Current : 100mA

Description	Primary Current (A)	Class 0.5	
		VA	LP (INR)
X308 - CTB 3PH RJ12 65/8	63		895
X306 - CTB 3PH RJ12 90/15	125	0.1	935
X307 - CTB 3PH RJ12 116/26	250		1,065

Note :- Above CTs will be supplied with integrated cable length of 1.5 meters



Rishabh Instruments Pvt. Ltd.

Metering Current Transformers



3 Phase CTs

Standard Secondary current: 5A

Group	Primary Current (A)	Class 0.5		Class 1		Class 3	
		VA	LP (INR)	VA	LP (INR)	VA	LP (INR)
Rish Xmer 3 PH 75/15(60)							
X301	100	-	-	1	-	-	1,175
	125	-	-	-	1,300	-	1,220
	150	1.5	1,300	1.5	-	2.5	1,285
	160	-	1,320	-	1,310	-	1,300
Rish Xmer 3 PH 105/21(40)							
X302	100	-	-	1	910	2	900
	125	-	-	-	930	-	925
	150	-	-	-	940	-	930
	160	-	970	1.5	960	2.5	940
	200	1.5	1,015	-	1,000	-	995
	250	-	1,070	-	1,060	-	1,045
Rish Xmer 3 PH 140/31(40)							
X303	250	1.5	1,060	1.5	1,045	2.5	1,040
	300	-	1,085	-	1,080	-	1,065
	400	2.5	1,080	2.5	1,080	3.75	1,070
	500	-	1,130	-	1,120	-	1,110
Rish Xmer 3 PH 185/27(45)							
X304	40	-	-	-	-	1.25	975
	60	-	-	-	-	-	1,000
	80	-	-	-	-	-	1,010
	100	-	-	-	1,040	1.5	1,025
	150	-	-	1.5	1,095	-	1,080
	200	-	-	-	1,170	2.5	1,150
	250	-	-	2.5	1,260	-	1,240
	300	-	-	-	1,320	-	1,305
	400	-	-	5	1,360	5	1,345
	500	-	-	-	1,425	-	1,365
Rish Xmer 3 PH 185/37(45)							
X305	300	-	-	2.5	890	2.5	880
	400	-	-	-	965	-	940
	500	-	-	5	1,095	5	1,070
	600	-	-	-	1,120	-	1,105
	800	-	-	-	1,150	-	1,150

Notes :-

1. Please add INR 290 for 1A secondary current (Before ordering, please check feasibility with local sales office)
2. Please add INR 90 for Busbar Mounting Kit
3. Please add INR 70 for DIN rail Mounting Kit
4. For any non-standard item, please contact local sales office

Rishabh Instruments Pvt. Ltd.

\$ For productwise approbations, please contact local sales office

Metering Current Transformers



Split Core CT

Standard Secondary current: 5A

Group	Primary Current (A)	Class 0.5		Class 1		Class 3	
		VA	LP (INR)	VA	LP (INR)	VA	LP (INR)
Rish Xmer 93/30SC (40)							
XS01	100			1.5		3.5	
	150			1.75	1,620	3.75	1,620
	200			2.5		5	
	250			3.75			
	300	2.5	1,980	5	1,955	6.25	1,955
	400	3.75	1,980	6.25		10	
	Rish Xmer 105/50SC (50)						
XS05	100			1.5	3,535		
	125				3,570		
	150			1.75	3,605		
	200	1.5	3,650	3.75	3,650		
	250		3,715		3,715		
	300	2.5	3,775	5	3,775		
	400		3,885	7.5	3,885		
	500	5	4,000		4,000		
	600	6.25	4,115	10	4,115		
	750	7.5	4,285	12.5	4,285		
	800		4,350		4,350		
Rish Xmer 125/50SC (40)							
XS02	250	1		2.5			
	300			3.75	2,225		
	400	2.5	2,225		2,225		
	500	3.75		5			
	600	5		7.5			
	750	7.5	2,340	10	2,340		
	800						
	1000						
	1200		2,625		2,625		
	1250						
	1500	10		15			
	1600		2,925		2,925		
	2000		3,215		3,215		

Metering Current Transformers



Split Core CT

Standard Secondary current: 5A

Group	Primary Current (A)	Class 0.5		Class 1	
		VA	LP (INR)	VA	LP (INR)
Rish Xmer 155/80SC (40)					
XS03	250	1		2.5	
	300	1.5		3.75	
	400	2.5	3,620		3,620
	500	3.75		5	
	600	5		7.5	
	750	7.5		10	
	800				
	1000	10		15	
	1200	15	3,790	30	3,790
	1250				
	1500				
	1600	20			
	2000			45	
	2500	25	4,925		4,925
	3000	30			

Rish Xmer 195/80SC (64)					
XS04	500				
	600	1.25	5,130	5	5,130
	750	5		10	
	800	7.5	5,370		5,370
	1000	10			
	1200	15	5,535	20	5,535
	1250				
	1500	20	5,830		5,830
	1600			30	
	2000	25	6,115		6,115
	3000				
	4000	30	6,415	45	6,415
	5000				

Notes :

1. Please add INR 120 for 1A secondary current (Before ordering, please check feasibility with local sales office)
2. For any non-standard item, please contact local sales office

Metering Current Transformers



Compact Split Core CT

Group	Primary Current / Secondary Current	Class 1		Class 3	
		VA	LP (INR)	VA	LP (INR)
Compact Split Core CT 36-18					
XCS1	60/1A				1,595
	75/1A	-	-	0.2	1,605
	80/1A				1,610
	100/1A				1,615
Compact Split Core CT 50-18					
XCS2	100/1A	-	-	0.2	2,220
	125/1A				
	150/1A		2,235		
	150/5A	0.2			
	200/1A		2,245	-	-
	200/5A				
	250/1A	1	2,255		
	250/5A				
Compact Split Core CT 50-32					
XCS3	200/1A	-	-	0.2	2,245
	250/1A		2,255		
	250/5A				
	300/1A		2,265		
	300/5A	0.2		-	-
	400/1A		2,280		
	400/5A				
	500/1A		2,290		
	500/5A				



Metering Current Transformers

Resin Cast CT

Standard Secondary current : 5A

Group	Primary Current (A)	Class 0.5		Class 1.0	
		VA	LP (INR)	VA	LP (INR)
LTRC-1 80/30(50)					
	60	-	-	1.5	805
XRC1	100	2.5	890	5	805
	125		920		835
	150	3.75	935		850
	160		940		855
LTRC-2 90/50(40)					
	200	3.75	755	7.5	680
XRC2	250		5	855	10
	300				
	320				
LTRC-3 110/72(40)					
	400	5	890	10	805
XRC3	500	7.5	925	15	840
	600	15	960		870
	630		965		875
LTRC-4 135/85(40)					
	800		1,015		920
XRC4	1,000	15	1,085	15	980
	1,200		1,140		1,035
LTRC-5 165/115(40)					
	1,500		1,360		1,235
XRC5	1,600	15	1,450	15	1,320
	2,000		1,615		1,465
LTRC-6 195/130(40)					
	2,500		2,140		1,945
XRC6	3,000	15	2,295	15	2,085
	3,200		2,760		2,505
LTRC-7 230/165(40)					
	3,000		2,880		2,615
XRC7	3,200	15	2,995	15	2,720
LTRC-8 295/200(40)					
	4,000		3,975		3,615
XRC8	5,000	15	5,075	15	4,610
LTRC-9 Wound Primary CT 83/W(45)					
	10				
	15				
	20				
XRC9	25	5	935	5	900
	30				
	40				
	40				
	50				

Note :

1. Please add INR 120 for 1A secondary current (Before ordering, please check feasibility with local sales office)
2. For any non-standard item, please contact local sales office

Protection Current Transformers



Resin Cast CT - Protection Class

Group	Primary Current (A)	5A Secondary			1A Secondary		
		VA	Class	LP (INR)	VA	Class	LP (INR)
LTRC-1 80/30(50)							
XRC1	100	1.5	5P5	1,285	1.5	5P5	1,405
	125				1,410		
	150	1	5P10	1,380	1	5P10	1,515
	160	1.25		1,285	1.25		1,515
LTRC-2 90/50(40)							
XRC2	200	1.25	5P5	1,775	1.5	5P5	1,955
	250				1,955		
	300	1.5	5P10	1,785	1	5P10	1,965
	320	1,800		1	1,975		
LTRC-3 110/72(40)							
XRC3	400	1	5P5	1,810	1	5P5	1,985
	500				1,990		
	600	1.5	5P10	1,820	1.50	5P10	1,995
	630			1,825	1.75		2,005
LTRC-4 135/85(40)							
XRC4	800	2.5	5P5	2,140	1.75	5P10	2,360
	1000				2,410		
	1200	3.75	5P10	2,190	2.5	5P10	2,455
	1250	5		2,235	2.5		2,455
LTRC-5 165/115(40)							
XRC5	1250	2.5	5P5	3,110	1.75	5P10	3,420
	1500				3,420		
	1600	5	5P10	3,145	2.5	5P10	3,460
	2000	6.25		3,145	2.5		3,460
LTRC-6 195/130(40)							
XRC6	2500	3.75	5P10	4,245	5	5P10	4,660
	3000				6.25		4,660
	3200				7.5		4,660
LTRC-7 230/165(40)							
XRC7	3000	3.75	5P10	4,645	5	5P10	5,105
	3200				5,105		
LTRC-8 295/200(40)							
XRC8	4000	10	5P10	6,175	15	5P10	6,790
	5000				20		6,790

Note :

1. For any non-standard item, please contact local sales office



Metering Current Transformers



Wound Primary Type : Rish Xmer

Standard Secondary current: 5A

Group	Primary Current (A)	Class 0.2		Class 0.5		Class 1	
		VA	LP (INR)	VA	LP (INR)	VA	LP (INR)
Rish Xmer 62/W							
	1						
	2.5						
	5						
	7.5						
XW01	10	1	590	2.5	555	5	525
	15						
	20						
	25						
	30						

Rish Xmer 74/W							
	1						
	2.5						
	5						
	7.5						
	10						
XW02	15	1.5	745	5	685	10	655
	20						
	25						
	30						
	40						
	50						
	60						

Note :

1. Please add INR 120 for 1A secondary current (Before ordering, please check feasibility with local sales office)
2. For any non-standard item, please contact local sales office



Metering Current Transformers



Busbar Type : Rish Xmer

Standard Secondary current: 5A

Group	Primary Current (A)	Class 0.5		Class 1	
		VA	LP (INR)	VA	LP (INR)
Rish Xmer 45/14 (40)					
XM01	30				550
	40			1	535
	50	-	-		
	60			1.5	340
	75				
	80	1.5	360	2.5	345
	100		365		
	120			3.75	
	125	2.5	370		360
	150		430	5	
	200	3.75	460		430
	250		490	7.5	450
	300	5	500	10	480
	Rish Xmer 45/21 (40)				
XM02	50				
	60	-	-	1.5	
	75				375
	80	1	375	2.5	
	100				
	120	1.5	395	3.75	395
	125		395		
	150	2.5			
	200	3.75	410		
	250			5	410
	300	5	440		
	400		465		450
	Rish Xmer 50/14 (30)				
XM03	40			1	360
	50				340
	60	-	-		345
	75			1.5	
	80				315
	100		400		345
	120	2.5	440	3.75	365
	125				
	150		445		370
	200	3.75	460	5	395
	250	5	480		405
	300	7.5	495	7.5	420

Metering Current Transformers



Busbar Type : Rish Xmer

Standard Secondary current: 5A

Group	Primary Current (A)	Class 0.5		Class 1	
		VA	LP (INR)	VA	LP (INR)
Rish Xmer 50/14 (50)					
XM04	30	-	-	1	640
	40	-	-		620
	50	1.5		1.5	620
	60		655		620
	75	2.5			655
	80		590		590
	100		625	5	505
	120	3.75			520
	125		525		
	150	5		7.5	555
	200	7.5		10	
	250		625		590
	300	10		12.5	
	300		710		
Rish Xmer 50/21 (30)					
XM05	50	-	-	1	
	60	-	-		315
	75	-	-	1.5	
	80	1	445		
	100	1.5	450	2.5	
	120		400		330
	125	2.5	405	3.75	335
	150		410		345
	200	3.75	420	5	355
	250		430		360
	300	5	445	7.5	370
	400		485		410
Rish Xmer 50/21 (50)					
XM06	50	1		2.5	625
	60	1.5	625	3.75	625
	75				590
	80	2.5			625
	100		630	5	590
	120	3.75	640		600
	125		645		615
	150	5	655	10	640
	200		660	12.5	645
	250	10	665	15	655
	300	7.5	670	12.5	660
	400	10	675	15	665

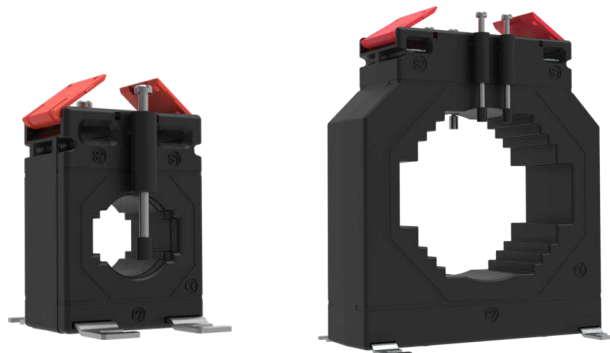
Metering Current Transformers



Busbar Type : Rish Xmer

Standard Secondary current: 5A

Group	Primary Current (A)	Class 0.5		Class 1	
		VA	LP (INR)	VA	LP (INR)
Rish Xmer 50/30 (30)					
XM07	75	-	-	1	315
	80	-	-	1.5	315
	100	-	345	-	325
	120	1	340	2.5	325
	125	-	345	-	330
	150	-	-	3.75	330
	200	2.5	365	-	345
	250	-	385	5	365
	300	-	395	-	370
	400	5	400	-	375
	500	-	405	6.25	380
	600	-	410	7.5	385
Rish Xmer 50/30 (50)					
XM08	50	-	-	1.5	455
	60	-	-	-	460
	75	-	-	2.5	465
	80	-	-	-	465
	100	1	-	3.75	485
	120	-	540	-	485
	125	2.5	-	5	490
	150	-	525	-	490
	200	-	545	7.5	500
	250	5	570	-	500
	300	-	575	10	525
	400	-	615	-	540
	500	10	660	12.5	555
	600	-	700	15	590



Metering Current Transformers



Busbar Type : Rish Xmer

Standard Secondary current: 5A

Group	Primary Current (A)	Class 0.2s		Class 0.2		Class 0.5		Class 1	
		VA	LP (INR)	VA	LP (INR)	VA	LP (INR)	VA	LP (INR)
Rish Xmer 62/R									
XM09	50							1.5	465
	60							2.5	470
	75					1.5	695	2.5	570
	80						700		
	100				745	2.5	710		630
	120			1.5	760	3.75	715	5	640
	125				765		720		645
	150	2.5		2.5	770	5	745	7.5	660
	200				800	7.5	760	10	680
	250		1,390	5	825	10	785		700
	300	5			875		810		720
	400				915		855	15	770
	500			10	955	15	900		825
	600				970		925		855

Rish Xmer 62/20 (40)									
XM10	50							1.5	465
	60							2.5	470
	75					1.5	695	3.75	620
	80						700		
	100					2.5	710		630
	120	1.5		1.5	780	3.75	715	5	640
	125						720		645
	150	2.5		2.5	770	5	745	7.5	660
	200		1,530		785	7.5	760	10	680
	250	3.75		5	805	10	785		700
	300				830		810		720
	400	5						15	
	500			10	880	15	855		770



Metering Current Transformers



Busbar Type : Rish Xmer

Standard Secondary current: 5A

Group	Primary Current (A)	Class 0.2s		Class 0.2		Class 0.5		Class 1		
		VA	LP (INR)	VA	LP (INR)	VA	LP (INR)	VA	LP (INR)	
Rish Xmer 62/30 (40)										
	50							1.25		
	60							1.5	485	
	75							2.5		
	80							2		
	100				555	1.5	550		490	
	120	1		1	570	2.5	555	3.75	495	
	125								500	
XM11	150	2.5		1.5	575	3.75	570	7.5	510	
	200			3.75	590	5	580	10	525	
	250		1,515	5	615	5	595	10	555	
	300	5		3.75	630	10	620		570	
	400				680	12.5	665	15	610	
	500				685		675		615	
	600	7.5		10	720		695	20	640	
	750	10			760	15	710	15	660	
		800								675

Rish Xmer 62/30 (50)										
	50							1.5		
	60							2.5	710	
	75									
	80					2.5	745	3.75		
	100									
	120	1.25		1.25	800			5		
	125					5	780		745	
XM12	150	2.5		2	830			7.5		
	200			3.75		10				
	250	5		5	840		800	15	760	
	300		1,560	5		15				
	400			6.25	870		810		780	
	500			7.5	880		840		810	
	600	10			915		880	30	840	
	750			10	1,015	20	970		935	
		800								955

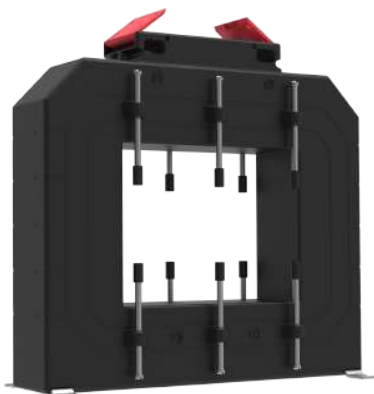
Metering Current Transformers



Busbar Type : Rish Xmer

Standard Secondary current: 5A

Group	Primary Current (A)	Class 0.2s		Class 0.2		Class 0.5		Class 1	
		VA	LP (INR)	VA	LP (INR)	VA	LP (INR)	VA	LP (INR)
Rish Xmer 62/40 (40)									
XM13	100								355
	120							1.5	360
	125								
	150							2.5	365
	200	1		1	430	1.5	410	3.75	385
	250	1.5		1.5	445	2.5	430		405
	300				460		445	5	
	400	2.5	1,480	2.5	495	5	480		
	500			5	500		485	7.5	
	600	3.75		7.5	520	7.5			410
	750	5		10	525	10	490	10	
	800				540		500		
Rish Xmer 74/20 (45)									
XM14	40							1.5	1,010
	50							2.5	
	60					1		3.75	
	75					1.5	1,105		1,015
	80					2.5		5	
	100				975		935	7.5	915
	120	1.5		1.5	985	5	960	10	920
	125				1,010		975		
	150	2.5		2.5	1,045	7.5	1,010	12.5	965
	200		1,635		805	10	770		745
	250			5	850		810	15	760
	300	5		7.5	870		830		770
	400					15	865	20	
	500			10	895		865	15	810



Metering Current Transformers



Busbar Type : Rish Xmer

Standard Secondary current: 5A

Group	Primary Current (A)	Class 0.2s		Class 0.2		Class 0.5		Class 1	
		VA	LP (INR)	VA	LP (INR)	VA	LP (INR)	VA	LP (INR)
Rish Xmer 74/30 (45)									
XM15	40							1.5	895
	50								
	60	-	-	-	-				
	75						1,035	2.5	900
	80					1.5	920	3.75	
	100				940		920		
	120	1.5		1.5	760	2.5	735	5	665
	125				765		745		685
	150				725	5	710	7.5	700
	200	2.5			800		810		795
	250		1,690		830	10	820	15	
	300				850		830		805
	400	5			925		895		830
	500				930	15	900	20	840
	600				935		915		865
	750	7.5			1,065	20	1,035		955
800	10			1,085	30	1,060	30	975	
Rish Xmer 74/40 (45)									
XM16	40							1	620
	50								625
	60	-	-					1.5	
	75								640
	80							2.5	
	100						735	3.75	655
	120	1				1.5	745	2.5	
	125						670		665
	150	1.5		1	715	3.75	680	5	
	200	2.5		2.5	735	5	700	10	670
	250			3.75	735				675
	300		1,775	5	745	10	705	15	680
	400	5		10	790		755		685
	500				825		790		715
	600				855				735
	750					15	820	20	745
800	7.5								
1000	10			870		825		750	

Metering Current Transformers



Busbar Type : Rish Xmer

Standard Secondary current: 5A

Group	Primary Current (A)	Class 0.2s		Class 0.2		Class 0.5		Class 1	
		VA	LP (INR)	VA	LP (INR)	VA	LP (INR)	VA	LP (INR)
Rish Xmer 74/50 (45)									
	100								480
	120							1.5	490
	125	-	-	-	-	-	-		
	150							2.5	500
	200					1.5	585	3.75	525
XM17	250	1.5		1.5	620	2.5	585	5	540
	300				645	5	610	7.5	570
	400	2.5		2.5					575
	500		1,865	5	655	7.5	615	10	590
	600	5		7.5	665	10	625	12.5	615
	750				705		670		625
	800	7.5		10	715	12.5	680	15	655
	1000	10			780		745		700

Rish Xmer 86/40 (45)									
	50							1.5	805
	60								
	75							2.5	
	80								
	100				810				810
	120	1.5		1.5	830	2.5	810	5	
	125								
XM18	150	2.5		2.5	790	5	720	10	670
	200	5			760	7.5	750		705
	250			5	830		810	15	735
	300	10	1,955	10	865	15	855		765
	400				900		890	20	805
	500	5			935		930		840
	600				965		955		865
	750	7.5		15	1,010	30		30	920
	800				1,035		1,005		760
	1000	10			1,050				820

Metering Current Transformers



Busbar Type : Rish Xmer

Standard Secondary current: 5A

Group	Primary Current (A)	Class 0.2s		Class 0.2		Class 0.5		Class 1	
		VA	LP (INR)	VA	LP (INR)	VA	LP (INR)	VA	LP (INR)
Rish Xmer 86/50 (45)									
XM19	100					1		1.5	630
	120						710		640
	125	-	-	-	-	1.5		2.5	645
	150					2.5	720	5	655
	200			1		5	755	7.5	675
	250	2.5		1.5	755		770		
	300	5		3.75		7.5		10	695
	400			5	765			15	
	500	7.5		10	710		700		700
	600	10	2,040			15		20	705
	750	7.5			750		710		710
	800			12.5	880	20	840		780
	1000	10			935		900		840
	1200			20	875	30	840	30	790
	1250	12.5			890		855		810
Rish Xmer 86/60 (45)									
XM20	100							1	625
	120							1.5	585
	125	-	-	-	-			2.5	
	150								590
	200					1.5	685	3.75	620
	250					2.5	700	5	640
	300	2.5		1.5	770	5	720	7.5	660
	400	3.75		2.5				12.5	685
	500			3.75	800	10	755		695
	600	5		5				15	700
	750			10	855	15	805	20	745
	800	7.5	2,040	12.5	880		830		760
	1000				915		870	30	820
	1200				925		880		880
	1250	10		15	985	20	935		890
	1500				1,035		985	20	930
	1600				1,065		1,015		965

Metering Current Transformers



Busbar Type : Rish Xmer

Standard Secondary current: 5A

Group	Primary Current (A)	Class 0.2s		Class 0.2		Class 0.5		Class 1	
		VA	LP (INR)	VA	LP (INR)	VA	LP (INR)	VA	LP (INR)
Rish Xmer 100/100V (45)									
XR01	400						1,065		965
	500					2.5	1,090	5	985
	600			-	-		1,120		1,010
	750						1,150		1,060
	800					5	1,170	10	1,070
	1000						1,250		1,125
	1200			5		10	1,305	15	1,185
	1250	5					1,350		1,195
	1500						1,400		1,260
	1600		1,740				1,495		1,315
	2000	7.5			10	15	1,535	30	1,320
	2500	10					1,650	20	1,345
Rish Xmer 100/130V (45)									
XR02	400						1,135		1,020
	500					2.5	1,190	5	1,070
	600						1,250		1,125
	750						1,320		1,195
	800			-	-	5	1,365	10	1,230
	1000						1,460		1,325
	1200					10	1,555	15	1,420
	1250						1,605		1,465
	1500						1,750		1,575
	1600						1,820		1,645
	2000					15	2,020	30	1,660
	2500				5		2,225		1,700
	3000						2,275		1,690
	3200					10	1,910	12.5	1,705



Metering Current Transformers



Busbar Type : Rish Xmer

Standard Secondary current: 5A

Group	Primary Current (A)	Class 0.2s		Class 0.2		Class 0.5		Class 1	
		VA	LP (INR)	VA	LP (INR)	VA	LP (INR)	VA	LP (INR)
Rish Xmer 104/60 (45)									
	100							1.5	825
	120							2.5	830
	125								
	150					2.5	955	5	840
	200			1	1,015	5	975	10	870
	250			2.5		7.5	1,000	12.5	885
	300	1.5		3.75	1,035		1,015		910
	400	2.5		7.5	1,025	10	1,010	15	900
XM21	500	7.5		10	975	15	960	20	915
	600				1,010		985		920
	750			15	1,065	20	1,035	30	940
	800		2,130		1,140		1,005		970
	1000	15		20	1,195		1,170		1,080
	1200				1,230		1,215		1,120
	1250				1,255	30	1,230	45	1,135
	1500			30	1,310		1,280		1,195
	1600				1,340		1,320		1,225
Rish Xmer 104/80 (45)									
	200							1.5	630
	250					1.5	710	2.5	655
	300					2.5	745	7.5	675
	400			1.5	800	7.5	770	10	710
	500				720	10	700		715
	600	3.75		5	755		735	12.5	
	750				830	15	810	15	750
XM22	800	5		7.5	840		825	15	760
	1000	7.5		12.5	900		840		825
	1200		2,220		965		915		880
	1250				975		955		890
	1500	10		15	1,005	20	975	30	925
	1600				1,040		1,035		960
	2000				1,140		1,105		1,070

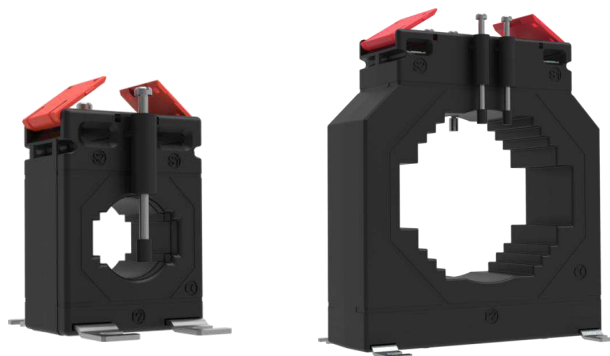
Metering Current Transformers



Busbar Type : Rish Xmer

Standard Secondary current: 5A

Group	Primary Current (A)	Class 0.2s		Class 0.2		Class 0.5		Class 1	
		VA	LP (INR)	VA	LP (INR)	VA	LP (INR)	VA	LP (INR)
Rish Xmer 140/80 (45)									
XM23	200					2.5	940	5	840
	250					5	965	10	855
	300			1.5	1,000	7.5	975	15	875
	400			2.5	1,065	10	1,040	20	935
	500	2.5		5	1,215		1,195		
	600	3.75		7.5	1,220	15	1,125		
	750	5		10	1,295		1,275	45	1,140
	800				1,315		1,285		1,165
	1000	10		15	1,385	30	1,355		1,230
	1200		2,305		1,420		1,390		1,250
	1250	12.5			1,450		1,400		1,260
	1500				1,470		1,420	60	1,280
	1600	15		30	1,515	60	1,440		1,305
	2000				1,560		1,495		1,315
	Rish Xmer 130/100 (50)								
XR06	600	2.5		2.5	2,240	5			
	750	3.75		5	2,345	10	2,030	10	1,920
	800	5	1,775	7.5					
	1000	7.5			2,455				
	1200			10			2,345		
	1250				2,555				2,030
	1500		2,220						
	1600	10			2,690	15	2,555	15	2,215
	2000			15	2,885		2,750		2,395
	2500				2,980		2,850		2,585
	3000	12.5	3,230		3,115		2,985		2,720



Metering Current Transformers



Busbar Type : Rish Xmer

Standard Secondary current: 5A

Group	Primary Current (A)	Class 0.2s		Class 0.2		Class 0.5		Class 1	
		VA	LP (INR)	VA	LP (INR)	VA	LP (INR)	VA	LP (INR)
Rish Xmer 140/100H (45)									
XM24	200					1.5	915	3.75	810
	250			-	-	2.5	930	5	830
	300	-	-			3.75	965	7.5	855
	400			1.5	1,005	7.5	985	10	885
	500			2.5	1,035	10	1,015	12.5	925
	600	2.5		3.75				15	
	750				1,085		1,065		975
	800	5		5	1,105		1,085	20	985
	1000			10	1,165	15	1,140		1,045
	1200	10		15	1,225		1,200		1,110
	1250		2,395		1,235		1,215	30	1,120
	1500				1,315		1,295		1,200
	1600			20	1,410	20	1,320		1,295
	2000				1,540		1,430	45	1,420
	2500	15			1,620	45	1,555		1,510
	3000			30	1,770		1,705		1,660
4000				1,825	60	1,810	60	1,730	

Rish Xmer 140/100V(45)									
XM25	200					1.5	915	3.75	810
	250			-	-	2.5	930	5	830
	300	-	-			3.75	965	7.5	855
	400			1.5	1,005	10	985	10	885
	500			2.5	1,035		1,015	12.5	925
	600	2.5		3.75		12.5		15	
	750				1,085		1,065		975
	800	5		5	1,105		1,085	20	985
	1000			10	1,165	15	1,140		1,045
	1200	10		15	1,225		1,200		1,110
	1250		2,395		1,235		1,215	30	1,120
	1500				1,315	30	1,295		1,200
	1600			20	1,410		1,400		1,295
	2000	15			1,540	45	1,530	45	1,420
	2500			30	1,615		1,600		1,510
	3000				1,770	60	1,750	60	1,660

Metering Current Transformers



Busbar Type : Rish Xmer

Standard Secondary current: 5A

Group	Primary Current (A)	Class 0.2s		Class 0.2		Class 0.5		Class 1	
		VA	LP (INR)	VA	LP (INR)	VA	LP (INR)	VA	LP (INR)
Rish Xmer 140/130V(45)									
XR03	400						1,230		1,105
	500					3.75	1,280	5	1,150
	600			-	-		1,340		1,210
	750						1,420	7.5	1,285
	800					5	1,465		1,325
	1000			5	1,640		1,560	10	1,420
	1200				1,735	10	1,660		1,520
	1250			7.5	1,785		1,720		1,560
	1500	-	-		1,915	15	1,835	15	1,680
	1600			10	1,985		1,915		1,750
	2000				2,170		2,090		1,835
	2500				2,240				
	3000				2,260	20	2,195	20	1,955
	3200			15	2,285		2,215		2,035
	4000				2,360		2,285		2,080
	5000				2,415		2,375		2,160
Rish Xmer 225/125(50)									
XR04	600				1,660	5	1,530		1,400
	750	-	-	5	1,645		1,520	10	
	800				1,650		1,530		1,405
	1000		2,345		1,660	10	1,540		1,520
	1200	5			1,720		1,595	15	1,570
	1250				1,730		1,645		1,610
	1500		2,730	10			1,700		
	1600	7.5			1,780	15	1,705		1,655
	2000		3,370		1,810		1,695	30	
	2500	10			1,940	30	1,820		1,705
	3000		3,605	15	2,035		1,950		1,915
	4000		3,920		2,265	45	2,070	60	2,030
	5000	15	4,395	30	2,535		2,455	100	2,360
	6000		4,895	60	2,720		2,620		2,575

Metering Current Transformers



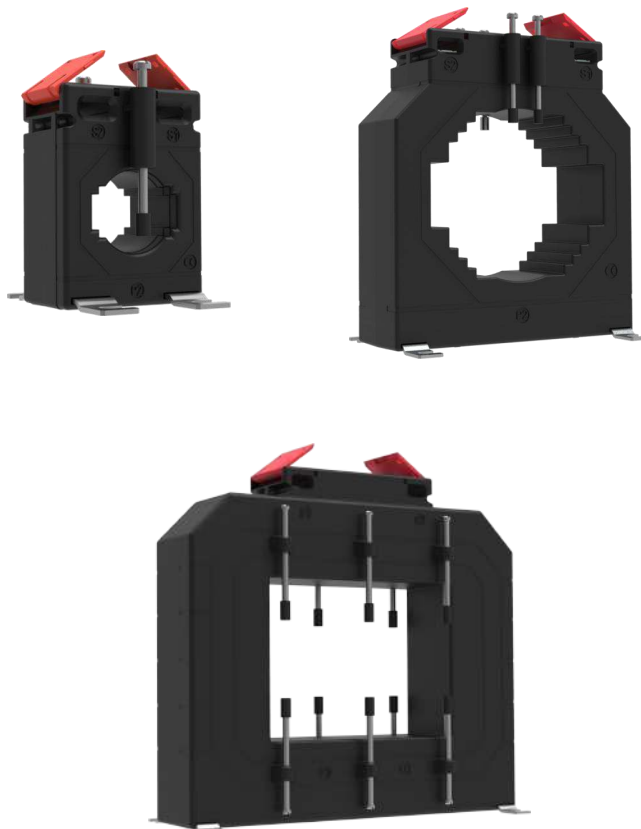
Busbar Type : Rish Xmer

Standard Secondary current: 5A

Group	Primary Current (A)	Class 0.2s		Class 0.2		Class 0.5		Class 1	
		VA	LP (INR)	VA	LP (INR)	VA	LP (INR)	VA	LP (INR)
Rish Xmer 225/167(50)									
	1000			3.75	1,515	5	1,480	10	1,380
	1200	-	-	5	1,660	10	1,635	15	1,575
	1250				1,675		1,645		1,595
	1500				1,730		1,700		1,660
	1600	5	2,820	10	1,760	15	1,725	30	1,690
XR05	2000	7.5	3,545		1,780		1,760		1,720
	2500				1,920		1,855		1,825
	3000	10	3,670	15	2,035		1,955		1,940
	4000		4,255		2,095	30	2,045	45	2,030
	5000		4,895		2,300		2,240		2,195
	6000	15	5,375	20	2,480		2,360		2,275
	7500		5,870		2,640		2,535		2,480

Note:

1. Please add INR 120 for 1A secondary current (Before ordering, please check feasibility with local sales office)
2. Please add INR 35 for DIN rail mounting Kit
3. For Class 0.5s CT prices, please contact local sales office



Protection Current Transformers



Busbar Type : Rish Xmer

Standard Secondary current: 5A

Group	Primary Current (A)	Class 5P5		Class 10P5		Class 5P10		Class 10P10	
		VA	LP (INR)	VA	LP (INR)	VA	LP (INR)	VA	LP (INR)
Rish Xmer 86/50 (45)									
XP06	100	1.5	780	1.5	705				
	150	1.75	825	1.75	750				
	200	2.5	855	2.5	780	-	-	-	-
	250	3.75	895	3.75	825				
	300		930		855	1,010	930		
	400		970		885		1,040		970
	500	5	1,010	5	930	1	1,085	1	1,010
	600		1,040		970		1,120		1,040
	750	7.5	1,105	7.5	1,020	1.5	1,170	1.5	1,085
	800		1,135		1,065	1.5	1,180	1.5	1,105
Rish Xmer 104/30 (45)									
XP07	50		1,770		1,705			-	-
	60	2.5	1,795	2.5	1,720	-	-		1,465
	75		1,815		1,735		1.5	1,585	
	80		1,820		1,745		1,725		1,620
	100	5	1,840	5	1,760	1.5	1,745		1,815
	125		1,865		1,795		1,765	2.5	1,830
	150	7.5	1,910	7.5	1,830	2.5	1,815		1,735
	200		1,965		1,900	3.75	1,795	3.75	1,795
	250	10	2,035	10	1,955		1,945		1,875
	300		2,095		2,030	5	2,005	5	1,945
	400		2,235		2,155		2,135		2,020
	500	15	2,365	15	2,285	7.5	2,265	7.5	2,205
	600		2,490		2,410		2,325	10	2,350
Rish Xmer 104/50 (45)									
XP08	150	2.5	1,355	2.5	1,345	-	-	-	-
	200	5	1,365	5	1,255	1.5	1,390	1.5	1,315
	250		1,390		1,445		1,435		1,345
	300	7.5	1,575	7.5	1,495		1,480		1,395
	400		1,675		1,600	2.5	1,575	2.5	1,495
	500		1,770		1,705		1,680		1,600
	600		1,870		1,800		1,770		1,675
	750	10	2,020	10	1,945		1,935		1,850
	800		2,075		1,995	5	1,980	5	1,900
	1000		2,265		2,190		2,180		2,090

Protection Current Transformers



Busbar Type : Rish Xmer

Standard Secondary current: 5A

Group	Primary Current (A)	Class 5P5		Class 10P5		Class 5P10		Class 10P10	
		VA	LP (INR)	VA	LP (INR)	VA	LP (INR)	VA	LP (INR)
Rish Xmer 104/60 (45)									
XP09	100	1.5	1,110	1.5	1,040	-	-	-	-
	150	2.5	1,150	2.5	1,080				1,005
	200	3.75	1,195	3.75	1,120	1	1,100	1	1,010
	250	5	1,215	5	1,275	1.5	1,145	1.5	1,065
	300		1,275			1,185		1,105	
	400		1,360		1,295		1,270		1,185
	500	7.5	1,450	7.5	1,380	1.75	1,315	1.75	1,235
	600		1,530		1,460		1,350		1,275
	750	10	1,490	10	1,420		1,400		1,320
	800		1,530			1,440		1,355	
Rish Xmer 140/60 (45)									
XP10	200	7.5	2,625	7.5	2,555	2.5	2,535	2.5	2,455
	250		2,690		2,615		2,595		2,475
	300		2,755		2,680		3.75		2,660
	400	10	2,885	10	2,810		2,790		2,685
	500		3,015		2,935		2,925		2,775
	600		3,145		3,055	5	3,055	5	2,835
	750		3,345		3,240		3,240		2,995
	800	12.5	3,405	12.5	3,310		3,310		3,025
	1000		3,660		3,595		3,570		3,255
	1200		3,930		3,845	7.5	3,835	7.5	3,525
	1250		3,990		3,920		3,895		3,650
	1500	15	4,320	15	4,245	10	4,225	10	3,780
	1600		4,445		4,360		4,355		3,945
	2000		20		4,970		20		4,895
	Rish Xmer 140/80 (45)								
XP11	200	5	2,260	5	2,180	2.5	2,360	2.5	2,285
	250		2,325		2,235		2,405		2,305
	300		7.5		2,365		7.5		2,285
	400		2,475		2,390		2,580		2,460
	500		2,585		2,495		2,680		2,540
	600		2,690		2,605		2,775		2,580
	750	10	2,855	10	2,770	5	2,950	5	2,625
	800		2,900		2,820		2,995		2,725
	1000		2,935		2,860		2,805		2,730
	1200		2,995		2,925		2,815		2,750
	1250		3,025		2,960		2,860		2,580
	1500	15	3,075	15	2,995	7.5	3,095	7.5	2,640
	1600		3,105		3,005		3,190		2,770
	2000		20		3,255		20		3,165
	2500		3,455		3,280		4,010		3,455

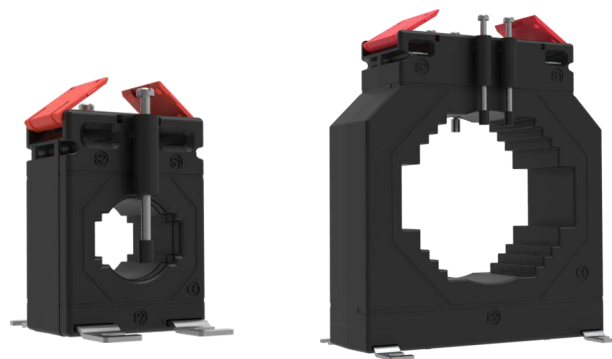
Protection Current Transformers



Busbar Type : Rish Xmer

Standard Secondary current: 5A

Group	Primary Current (A)	Class 5P5		Class 10P5		Class 5P10		Class 10P10	
		VA	LP (INR)	VA	LP (INR)	VA	LP (INR)	VA	LP (INR)
Rish Xmer 140/100 (45)									
XP12	250		1,315		1,235				
	300	2.5	1,350	2.5	1,275				
	400	3.75	1,435	3.75	1,350	-	-	-	-
	500	5	1,500	5	1,435				
	600		1,575		1,500		1,485		1,405
	750	7.5	1,705	7.5	1,620		1,610		1,520
	800		1,735		1,655	1	1,635	1	1,565
	1000		1,815		1,735		1,795		1,720
	1200		1,850		1,765		1,745		1,655
	1250		1,865		1,795		1,770		1,695
	1500	10	2,035	10	1,960		1,945		1,865
	1600		2,110		2,035	1.25	2,010	1.25	1,940
	2000		2,380		2,320		2,285		2,215
	2500		2,730		2,645		2,635		2,555
	Rish Xmer 225/60 (50)								
XP13	100		3,200	10	3,305	-	-	-	-
	150	10	3,280		3,135	5	3,490	-	-
	200		3,335		3,165	7.5	3,555	10	3,480
	250		3,455		3,290	10	3,585		3,555
	300		3,610		3,410		3,625		3,675
	400		3,560		3,395		3,635		3,475
	500		3,585		3,430		3,755		3,585
	600		3,635	15	3,490		3,875		3,710
	750	15	3,710		3,560		4,070	15	3,885
	800		3,790		3,635	15	4,120		3,945
	1000		3,935		3,770		4,360		4,185
	1200		4,120		3,965		4,465		4,290
	1250		4,135		3,985		4,485		4,315
	1500		4,290		4,135		4,595		4,435
	2000		4,400		4,250		4,870		4,700



Protection Current Transformers



Busbar Type : Rish Xmer

Standard Secondary current: 5A

Group	Primary Current (A)	Class 5P5		Class 10P5		Class 5P10		Class 10P10	
		VA	LP (INR)	VA	LP (INR)	VA	LP (INR)	VA	LP (INR)
Rish Xmer 225/125 (50)									
XP14	600		2,050	5	1,870				
	750	5	2,120		2,305				
	800		2,140	10	2,325	-	-	-	-
	1000		2,395		2,225				
	1200	10	2,580		2,800	1.5	2,775		2,730
	1250		2,595		2,845		2,820	2.5	2,750
	1500		2,770	15	2,580	2.5	2,770		2,760
	1600		2,860		2,690		2,770		2,760
	2000	15	3,055		2,860	3.75	3,165	5	3,200
	2500		3,165		2,975		3,490		3,555
	3000		3,350		3,410	5	3,650	7.5	3,805
	4000		3,480	20	3,555		3,720		3,935
	5000	20	3,720		3,490		3,910	10	4,085

Rish Xmer 225/167 (50)									
XP15	1000		2,595	5	2,365	-	-	-	-
	1200		2,615		2,645	1.5	2,845	2.5	2,775
	1250	5	2,690	7.5	2,690		2,880		2,820
	1500		2,770		2,800	2.5	2,930	3.75	2,925
	1600		2,800		2,845		2,980		2,900
	2000	7.5	3,025	12.5	3,075	3.75	3,240	5	3,280
	2500	10	3,145	15	3,225		3,305	7.5	3,255
	3000	15	3,255		3,375		3,675	10	3,650
	4000		3,650	20	3,435	7.5	4,030		4,030
	5000	20	3,875		3,625		4,010	12.5	4,120
	6000		3,895		3,645		4,035		4,140

Note :

1. Please add INR 120 for 1A secondary current (Before ordering, please check feasibility with local sales office)
2. Please add INR 35 for DIN rail Mounting Kit
3. For any non-standard item, please contact local sales office



Metering Current Transformers



TW e series CT

Standard Secondary current : 5 A

Group	Primary Current (A)	Class 0.5		Class 1		
		VA	LP (INR)	VA	LP (INR)	
OD X ID X HT :- 73 X 30 X 50mm						
TE01	50	-	-	-	-	
	60	-	-	-	-	
	75	-	-	-	-	
	100	2.5	630	5	460	
	150	5	465	15	470	
	200	10	630	15	470	
OD X ID XHT :- 80 X 30 X 100mm (Without Encapsulation)						
TE02	100	2.5	840	10	680	
	150	5	1,565	15	1,650	
	200	10	1,565	15	1,395	
OD X ID XHT :- 92 X 43 X 41mm						
TE03	200	5	490	5	460	
	250	-	-	10	490	
		5	490	5	460	
		7.5	695	10	525	
	300	-	-	15	820	
		5	510	5	465	
		10	720	10	570	
	400	-	-	15	720	
		5	510	5	465	
		10	720	10	570	
	OD X ID XHT :- 95 X 50 X 40mm					
	TE04	200	5	590	5	450
250		-	-	10	495	
		5	545	5	470	
		7.5	770	10	610	
300		-	-	15	875	
		5	555	5	525	
		10	810	10	640	
OD X ID XHT:- 100 x 58 x 41mm						
TE05		400	5	495	5	465
		500	10	700	15	525
			5	495	5	465
			10	525	10	495
	600	15	700	15	525	
		5	495	5	465	
		10	525	10	495	
	OD X ID XHT:- 100 x 58 x 41mm					
	TE05	400	5	495	5	465
		500	10	700	15	525
			5	495	5	465
			10	525	10	495
600		15	700	15	525	
		5	495	5	465	
	10	525	10	495		

Metering Current Transformers



TW e series CT

Standard Secondary current : 5 A

Group	Primary Current (A)	Class 0.5		Class 1	
		VA	LP (INR)	VA	LP (INR)
OD X ID XHT:- 110 x 72 x 41mm					
TE06	800	5	500	5	465
		10	520	10	495
	1000	15	665	15	500
		5	520	5	480
		15	725	15	570
OD X ID XHT :- 135 x 85 x 30mm					
TE07	800	5	495	5	480
		10	535	10	520
		15	810	15	640
	1000	5	495	5	465
		15	810	15	640
		-	-	15	700
OD X ID XHT :- 159 x 113 x 40mm					
TE08	1200		810		640
	1500		975		810
	1600	15	1,010	15	840
	2000		1,095		930
OD X ID XHT :- 165 X 130 X 30mm					
TE09	2400		1,210		1,040
	2500	15		15	
	3000		1,310		1,135
OD X ID XHT :- 190 X 150 X 40mm (Without Encapsulation)					
TE10	3200	15	1,565	15	1,405
OD X ID XHT :- 235 X 200 X 35mm (Without Encapsulation)					
TE11	4000	-	-	15	1,910
	5000	-	-		2,540
Accessories (Optional) - Wall Mounting Bracket					
Sr. No.	OD/ID (AXIAL)	LP (INR)			
1	73/30 (50)	45			
2	92/43 (41)	50			
3	100/58 (41)	60			
4	110/72 (41)	60			
5	159/113 (40)	65			

Notes :

1. Please add INR 120 for 1A secondary current (Before ordering, please check feasibility with local sales office)
2. Please add INR 35 for Busbar Mounting Kit
3. For any non-standard item, please contact local sales office



Rishabh Instruments Pvt. Ltd.

\$ For productwise approbations, please contact local sales office

Protection Current Transformers



TW-E series (without encapsulation)

Standard Secondary current: 5A

Group	Primary Current (A)	Type OD/ID (Axial)	Class 5P10	
			VA	LP (INR)
Protection Class CT (Rish TW-E Series)				
XP01	100	140 / 30 (140)	15	7,255
	150	140 / 30 (100)		4,445
	200	140 / 50 (100)		3,755
	250	140 / 50 (90)		3,755
	400	140 / 60 (80)		2,180
	600	140 / 60 (60)		2,050
	800	140 / 80 (80)		2,080
	1000	160 / 105 (70)		2,150
	1200	160 / 105 (70)		2,180
	1250	160 / 105 (70)		2,180
	1600	180 / 115 (50)		2,245
	2000	185 / 130 (50)		2,285

Note :-

1. Please add INR 120 for 1A secondary current (Before ordering, please check feasibility with local sales office)
2. For any non-standard item, please contact local sales office



Metering Current Transformers



TW series CT

Standard Secondary current : 5 A

Group	Primary Current (A)	Class 0.2		Class 0.5s		Class 0.5		Class 1	
		VA	LP (INR)	VA	LP (INR)	VA	LP (INR)	VA	LP (INR)
TW-1 : OD X ID X HT:- 73 X 30 X 40mm									
TW01	50								
	60								
	75					-	-	1.5	420
	80								
	100	-	-	-	-	1.5	470	2.5	455
	120					2.5	495	3.75	470
	125						505	5	495
	150					5	525	10	
	200								
TW-2 : OD X ID X HT:- 73 X 30 X 50mm									
TW02	50					-	-	1.5	510
	60								
	75					1.5	550	2.5	525
	80	-	-	-	-				
	100					2.5	570	5	550
	120								
	125								
	150			2.5	585	5		10	570
	200	2.5	630	5	600	10	585	15	585
TW-3 : OD X ID X HT:- 92 X 43 X 41mm									
TW03	75					-	-	1	585
	80					-	-	1.5	590
	100								600
	120	-	-	-	-	1	595	2.5	
	125								
	150					1.5	610	3.75	610
	200	1.5	725	5	685	5	615	10	
	250	2.5	745	7.5	705	7.5	620	15	
	300	3.75	760	10		10	625	20	
TW-4 : ODX ID X HT:- 100 X 58 X 41mm									
TW04	120					-	-	1	
	125							1.5	545
	150					1	550	2.5	
	200	-	-	1.5	580	2.5		5	
	250			2.5	600	3.75	580	7.5	
	300			3.75	620	5	590	10	580
	400	5	670	7.5	600	10	545	20	
	500	7.5	695	10	615	15	580	25	
	600	10	715	15	625		595		595

Metering Current Transformers



TW series CT

Standard Secondary current : 5 A

Group	Primary Current (A)	Class 0.2		Class 0.5S		Class 0.5		Class 1	
		VA	LP (INR)	VA	LP (INR)	VA	LP (INR)	VA	LP (INR)
TW-5 : OD X ID X HT:- 110 X 72 X 41mm									
TW05	200	-	-	-	-	-	-	1.5	580
	250	-	-	-	-	1.5	610	2.5	610
	300	-	-	-	-	2.5	630	5	630
	400	2.5	705	5	680	7.5	660	12.5	660
	500	3.75	735	7.5	705	10	695	15	695
	600	5	755	10	725	15	710	30	710
	800	10	770	15	750	15	725	30	725
	1000	-	785	-	770	-	760	-	760
TW-6 : OD X ID X HT:- 159 X 113 X 40mm									
TW06	600	1.5	865	3.75	850	5	830	10	830
	800	2.5	875	7.5	865	10	850	15	850
	1000	3.75	900	-	875	-	865	-	865
	1200	-	940	-	925	-	915	-	915
	1250	-	970	15	965	20	960	30	960
	1500	-	1,000	-	1,000	-	995	-	995
	1600	-	1,040	-	1,035	-	1,025	-	1,025
	2000	15	1,090	20	1,065	25	1,050	45	1,050
	2500	-	1,145	-	1,140	-	1,135	-	1,130
	3000	-	1,235	25	1,225	30	1,215	45	1,200
	3200	-	1,320	-	1,280	-	1,275	-	1,255

Sr. No.	Accessories (Optional) - Wall Mounting Bracket	OD/ID (AXIAL)	LP (INR)
1	TW-2	73/30 (50)	45
2	TW-3	92/43 (41)	50
3	TW-4	100/58 (41)	60
4	TW-5	110/72 (41)	60
5	TW-6	159/113 (40)	65

Note :-

1. Please add INR 120 for 1A secondary current (Before ordering, please check feasibility with local sales office)
2. For any non-standard item, please contact local sales office



Metering Current Transformers



Summation CT

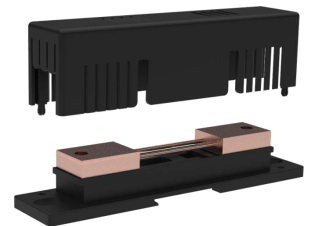
Standard Secondary current: 5A

Group	Type	Primary Current (A)	Class 0.5		Class 1	
			VA	LP (INR)	VA	LP (INR)
XU01	Rish Xmer Sigma 75	5+5	5	1,520	5	1,360
			10	1,530	10	1,385
			15	1,560	15	1,410
			-	-	20	1,530
			-	-	25	1,560
	Rish Xmer Sigma 75	5+5+5	5	1,610	5	1,385
			10	1,625	10	1,405
			15	1,655	15	1,435
			-	-	20	1,625
			-	-	25	1,655
	Rish Xmer Sigma 75	5+5+5+5	5	1,665	5	1,395
			10	1,695	10	1,410
			15	1,705	15	1,435
			-	-	20	1,690
			-	-	25	1,705
Rish Xmer Sigma 150	5+5+5+5+5	5	1,750	5	1,510	
		10	1,770	10	1,530	
		15	1,820	15	1,555	
		-	-	20	1,770	
		-	-	25	1,820	
Rish Xmer Sigma 150	5+5+5+5+5+5	5	1,825	5	1,540	
		10	1,850	10	1,560	
		15	1,870	15	1,575	
		-	-	20	1,850	
		-	-	25	1,870	
Rish Xmer Sigma 150	5+5+5+5+5+5+5	5	1,850	5	1,595	
		10	1,870	10	1,620	
		15	1,900	15	1,640	
		-	-	20	1,870	
		-	-	25	1,900	
Rish Xmer Sigma 150	5+5+5+5+5+5+5+5	5	1,920	5	1,680	
		10	1,960	10	1,720	
		15	2,005	15	1,740	
		-	-	20	1,950	
		-	-	25	2,005	



Accuracy Class 0.5

Group	Current Rating (A)	LP (INR)		
		50/60/75mV	100mV	150mV
	1	270	405	465
	5	270	440	465
	10	270	440	465
	15	270	490	520
	20	270	490	520
	25	315	490	520
	30	315	505	550
	40	315	505	565
	50	315	505	640
	60	315	545	800
	75	315	575	920
	100	400	685	1,080
	125	495	880	1,135
	150	495	880	1,320
	175	870	1,095	1,555
	200	885	1,180	1,675
	250	975	1,320	1,935
YN01	300	1,260	1,525	2,255
	400	1,390	1,880	2,595
	500	1,445	2,025	2,890
	600	1,530	2,265	3,280
	750	1,705	2,375	3,915
	800	2,425	3,535	5,355
	1000	3,715	4,340	7,485
	1200	4,030	4,710	9,735
	1250	5,100	5,930	10,475
	1500	5,865	6,520	11,540
	2000	6,165	8,025	17,095
	2500	6,665	9,500	18,180
	3000	7,295	12,285	20,570
	4000	10,375	18,505	26,495
	5000	16,470	22,600	32,690
	6000	26,460	28,845	42,310
	7500	32,055	39,445	53,405
	10000	62,670	79,620	85,445
	15000	106,995	117,300	128,490



Note :

1. For 0.2 CI Shunt (upto 2500A), multiply the standard price by 1.3
2. For any non-standard item, please contact local sales office
3. "Insulating Base" will be supplied with shunts 1 to 30A shunt ratings only

Rishabh Instruments Pvt. Ltd.

\$ For productwise approbations, please contact local sales office

Terms and conditions

- This issue of Price List supersedes all previous Price Lists
- All Prices are in INR
- The prices are subject to change without prior notice
- List Prices mentioned are exclusive of all taxes & duties
- Prices charged will be as prevailing on the date of dispatch
- Minimum order value criterion should be observed while ordering
- The company reserves the right to supply goods at its discretion
- For any non-standard requirement, please contact nearest sales office regarding technical feasibility, price & delivery

Warranty

- All the products listed in the Price List carry a warranty of 18 months against manufacturing defects (unless otherwise specified) from the date of purchase or 12 months from the date of commissioning, whichever is earlier

Note

- To facilitate the ordering kindly make use of product configurator
- Kindly refer respective datasheets for detailed technical specifications. Technical specs given in this price list are in abbreviated form only for easy understanding. Selection of products must be done from the datasheets.
- Since the product approvals mentioned in the price list are on generic header level, kindly contact to our nearest sales office for product-wise approvals
- For any enquiry regarding Energy Measurement Software and Solar Inverters, kindly contact our sales office.



Product up-gradation is a continuous process. Hence data in this price list is subject to change without prior notice. For the latest information, please get in touch with our sales offices



Measure



Control



Record



Analyze

RISHABH INSTRUMENTS PVT. LTD.

+91 253 2202028/99 | marketing@rishabh.co.in | www.rishabh.co.in